

802.11g/b Multi-Solution Hotspot Subscriber

Features & Benefits

Industry Leading Built-In High Speed Long Range Wireless AP

- The built-in 802.11g/b access point allows wireless users to access the Internet from anywhere regardless of the physical network limitations within the wireless coverage. Featuring 200mW high power boosting not only range but also increasing data throughput. Up to 5 times the bandwidth compared to traditional 802.11b available for multiple users.



Proficient Network User Access Control

- The WSR-3800 can manage up to 500 users via its local database, and up to 2000 random generated users. Up to 50 users can be supported simultaneously at any single time. Enhanced user management software allows the administrator to prohibit guests from accessing private networks preventing network intrusion. New advanced group-policy based user management promotes more flexibility for administrators. User based QoS regulates bandwidth from long occupied sessions maintaining steady connectivity for all users.

Support Various Network Account Server Standards

- For small to medium businesses, the WSR-3800's built-in user database provides quick and secure access to the Internet to customers. Access rules can be individually assigned to users and to group users. IEEE 802.1x connectivity extends the limitations of traditional HotSpot gateways that normal user management software cannot control. The WSR-3800 supports external authentication methods such as RADIUS, POP3, POP3S and LDAP/AD.

Advanced Security Management Support

- Multi-layer traffic control support provides the most advanced traffic management to prevent hackers or unauthorized intruders from accessing the network. Firewall functions are enhanced with extra security that repel numerous attacks such as DoS and UDP flooding. The WSR-3800 also provides additional port-based protection, such as WAN to private, WAN to public and Private to Public just to name a few. Wireless client security prevents guest users from seeing each other. SSH secure console allows administrators to configure and monitor the network device from remote locations.

IP Plug & Play

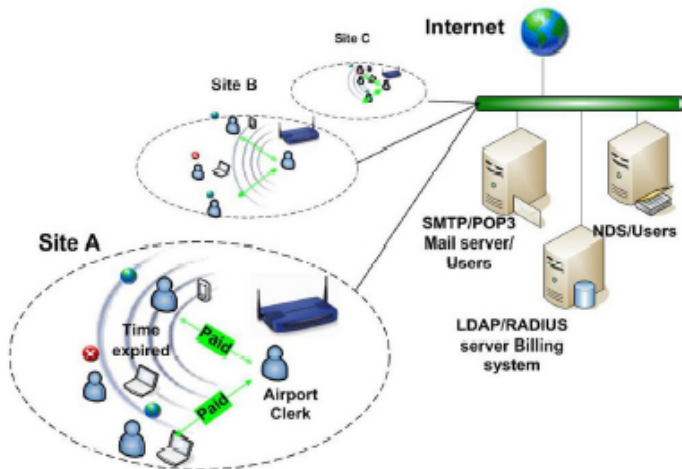
- The new IP Plug-&Play feature allows the users to access the Internet without reconfiguring their IP settings. The WSR-3800 will validate a connection with the client asking for access to the Internet and redirects the user to a valid Internet connection. Port redirection allows users to send/receive emails and reconfigure email clients.

Real-Time Online Monitoring

- Built in monitoring displays traffic statuses on both WEB based and SNMP based management software. For advanced billing purposes, traffic statuses per session can also be retrieved via the real-time online monitoring management software.

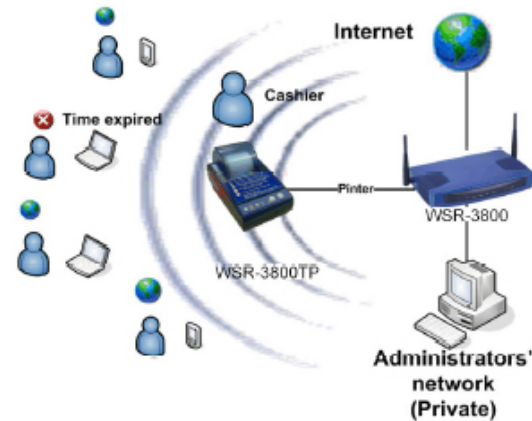
Large Business Solutions:

Supports centralized user account servers for providing detailed billing information and user control in multiple franchise locations.



Small Business/Coffee Shop Solutions:

Flexible and adaptable to many business solutions. Operate the unit directly from the press of a button on the ticket printer. No on-site PC necessary!



Specifications

Networking:

- Support NAT, router mode
- Support IP plug & play
- Support static IP, DHCP client and PPPoE client on WAN interface
- Built-in DHCP server
- Support DHCP relay
- Built-in NTP client
- Support HTTP proxy
- Support destination IP/Port redirect
- Support User isolation
- Support IPSec (ESP), PPTP and H.323 pass-through under NAT mode
- Support Virtual Server mapping
- Support DMZ server mapping
- Support static route

User Management:

- Built-in local user database of maximum 500 local user accounts
- Support MAC address locking with local user database
- Provide 2000 on demand users generated by optional Ticket Printer
- Support 10 guest accounts
- Support MAC ACL
- Support up to 5 authentication policies, each policy can be set up with different authentication and authorization
- Support external authentication methods: POP3, POP3S, RADIUS, LDAP & Window NT domain
- Allow/disallow multiple login
- Support user login scheduled control
- Customizable idle timer
- Customizable guest session time control
- Support MAC/IP address pass-through
- Support GRIC roaming in
- Customizable Black List
- Support Local / Radius Accounting

Security Policy:

- User isolation security
- Secure HTML Login Page(SSL)
- Support 64/128-bit WEP encryption
- Support IEEE 802.1x (EAP, MD-5, EAP-TLS)
- Provides multiple DoS protection
- Customizable packet filter rules by group
- Customizable Walled Garden (free surfing area)

Administration:

- On-line status monitoring
- Session history
- Administrator and user authentication interfaces protection by SSL
- Customizable user login & logout web pages
- Redirect to target URL after successful login
- Support web-based administrative interface
- SSH remote administration interface
- Support SNMP v2 read only
- Support external syslog server
- Support user bandwidth control
- Support remote firmware update
- Support backup and restore of configuration data

Standard Compliance:

- IEEE 802.11b
- IEEE 802.11g
- IEEE 802.3 10Base T Ethernet
- IEEE 802.3u 100Base TX Fast Ethernet

Dimensions:

- Size: 24.8cm(W) x 4.7cm(H) x 4.9cm(D)
- Weight: 470g
- 2dBi Diveristy Antenna x2

Operating Environment:

- Power: 110-240 VAC 50/60Hz
- Operating Temperature: 5-45C
- Wall-mount or Desktop for indoor use

Connectors:

- 1 WAN port (Fast Ethernet RJ-45)
- 2 Private LAN Port (Fast Ethernet RJ45)
- 2 Public LAN Port (Fast Ethernet RJ45)
- 1 RJ11 port (For Ticket Printer)
- 1 Reset Button
- 1 Power 12VDC

LED Indicators:

- 1 Power
- 1 WAN Link
- 4 WAN Link
- 1 Wireless Link

Wireless Function Specification:

- Data rate for IEEE 802.11g: 1,2,6,9,12,24,36,48,54Mbps (automatically adjusted)
- Data rate for IEEE 802.11b: 1,2,5.5,11Mbps (automatically adjusted)
- Wireless Frequency Range: 2.4GHz to 2.484GHz
- Modulation Technology
- 802.11g: OFDM (64-QAM, 16-AM, QPSK, BPSK)
- 802.11b: DSSS (DBPSK, DQPSK, CCK)

Optional Accessories



WSR-3800TP

Optional Ticket Printer with multi-setting printing capability

Related Accessories



SL-3054CB3+ Deluxe

200mW 802.11g high power client bridge + AP



SL-3064CB+

200mW 802.11g high powered buscard